

ISLE OF MAN PLANNING SCHEME

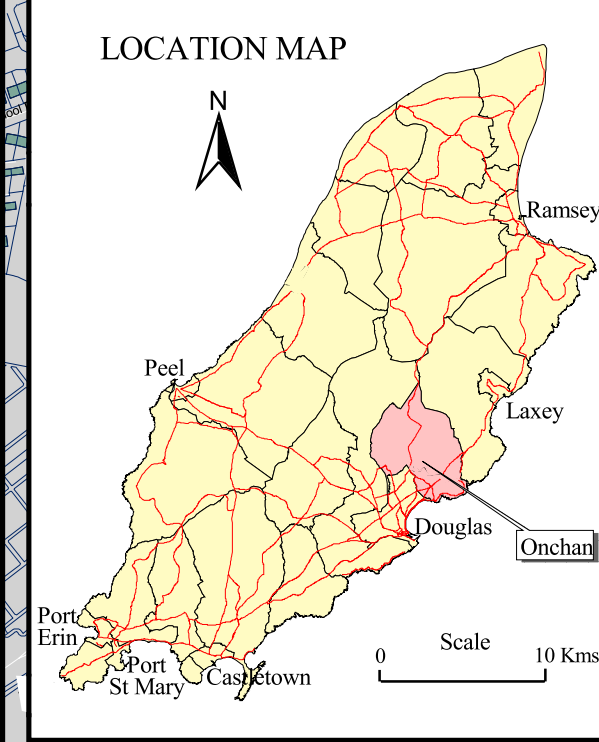
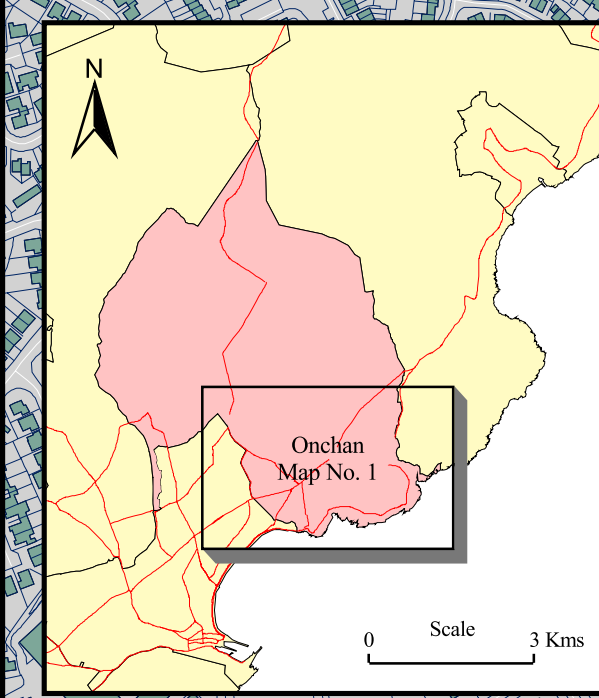
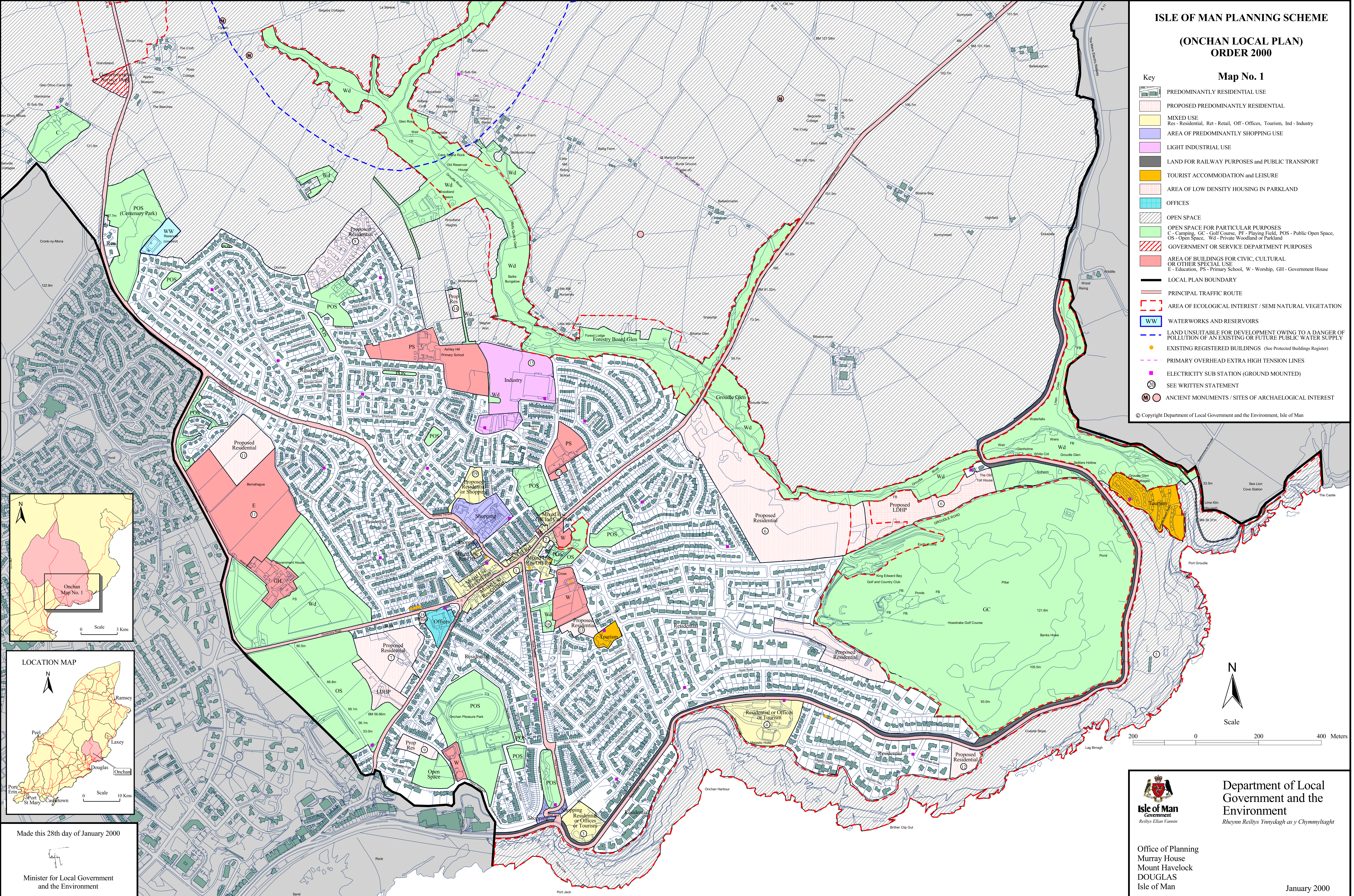
(ONCHAN LOCAL PLAN)  
ORDER 2000

Map No. 1

Key

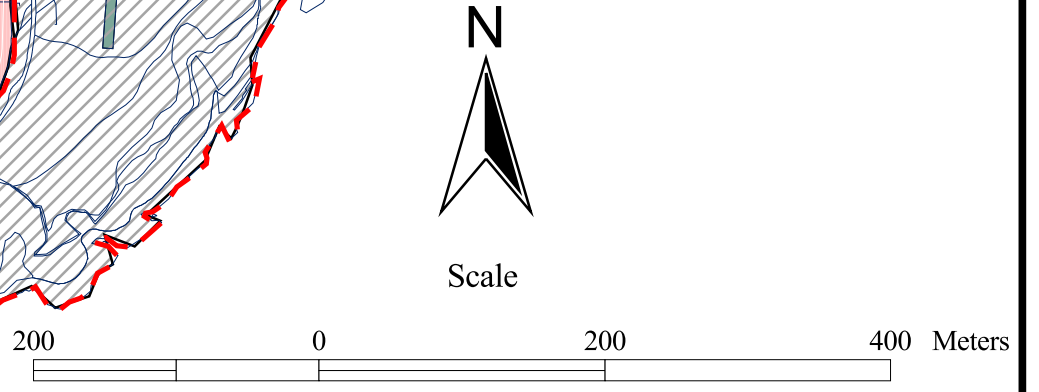
- PREDOMINANTLY RESIDENTIAL USE
- PROPOSED PREDOMINANTLY RESIDENTIAL
- MIXED USE  
Res - Residential, Ret - Retail, Off - Offices, Tourism, Ind - Industry
- AREA OF PREDOMINANTLY SHOPPING USE
- LIGHT INDUSTRIAL USE
- LAND FOR RAILWAY PURPOSES and PUBLIC TRANSPORT
- TOURIST ACCOMMODATION and LEISURE
- AREA OF LOW DENSITY HOUSING IN PARKLAND
- OFFICES
- OPEN SPACE
- OPEN SPACE FOR PARTICULAR PURPOSES  
C - Camping, GC - Golf Course, PF - Playing Field, POS - Public Open Space,  
OS - Open Space, Wd - Private Woodland or Parkland
- GOVERNMENT OR SERVICE DEPARTMENT PURPOSES
- AREA OF BUILDINGS FOR CIVIC, CULTURAL  
OR OTHER SPECIAL USE  
E - Education, PS - Primary School, W - Worship, GH - Government House
- LOCAL PLAN BOUNDARY
- PRINCIPAL TRAFFIC ROUTE
- AREA OF ECOLOGICAL INTEREST / SEMI NATURAL VEGETATION
- WATERWORKS AND RESERVOIRS
- LAND UNSUITABLE FOR DEVELOPMENT OWING TO A DANGER OF  
POLLUTION OF AN EXISTING OR FUTURE PUBLIC WATER SUPPLY
- EXISTING REGISTERED BUILDINGS (See Protected Buildings Register)
- PRIMARY OVERHEAD EXTRA HIGH TENSION LINES
- ELECTRICITY SUB STATION (GROUND MOUNTED)
- SEE WRITTEN STATEMENT
- ANCIENT MONUMENTS / SITES OF ARCHAEOLOGICAL INTEREST

© Copyright Department of Local Government and the Environment, Isle of Man



Made this 28th day of January 2000

Minister for Local Government  
and the Environment



Department of Local  
Government and the  
Environment  
*Rheynn Reilthys Ynnydagh as y Chymmyltaght*

Office of Planning  
Murray House  
Mount Havelock  
DOUGLAS  
Isle of Man

January 2000